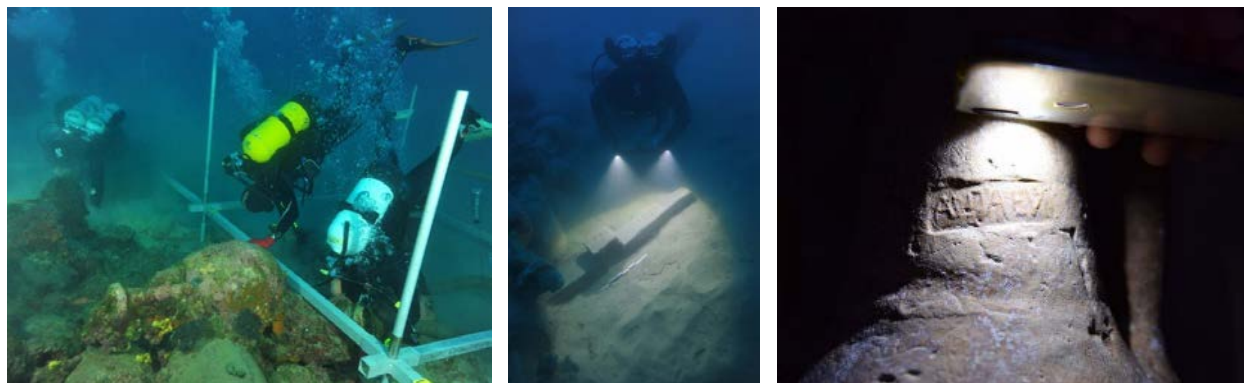


VISIT THE UNDERWATER ARCHAEOLOGICAL SITE CAPE LETAVICA ON PAG ISLAND AND SUPPORT THE STRATON PROJECT



The Letavica site lies at a depth of 37 to 39 meters, at the line between the rocky and sandy slopes of the sea bottom, at a distance of about 130 meters from the sea shore. It consists of a group of about 400 well-visible amphorae, typologically classified as the Lamboglia 2 type present in several variants. The site is dated to the 1st century BC, i.e. at the time of the late Roman Republic. The amphorae are mostly covered with marine concretions and are accreted in a compact whole. Only a small part is slightly offset from the main concentration of the finds.

For more information about the site and the STRATON project see the website: <https://www.discover-pag.com/hr/>.

Diving is organized by the Diving center Foka. It is required to bring diving certificate (Advanced diver). Diving insurance is not mandatory, but it is preferable.

By booking this diving excursion, 50% of the purchase will be donated to support forthcoming archaeological excavations at the Letavica site.

PRICE PER PERSON: 800 KN (CCA 105 E)

PRICE INCLUDES: bus transport, dive on the site, boat transport, rental of diving equipment, lunch and drink.

MAXIMUM NO. OF PARTICIPANTS: 15